

Rosebery Avenue, Linslade, LU7

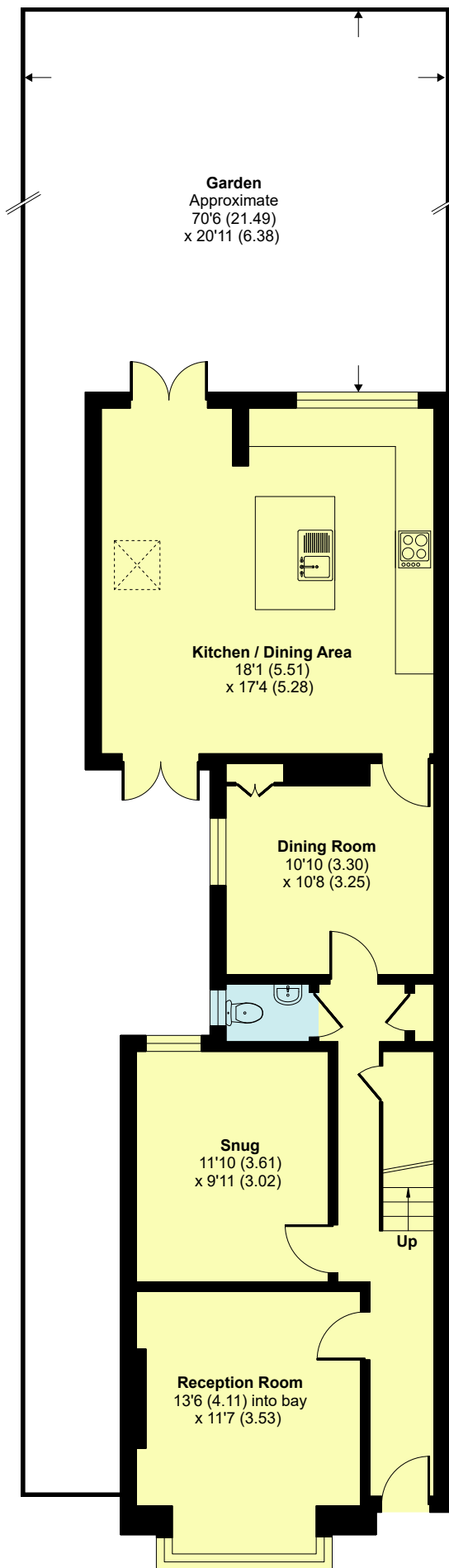
Approximate Area = 1747 sq ft / 162.3 sq m

Limited Use Area(s) = 362 sq ft / 33.6 sq m

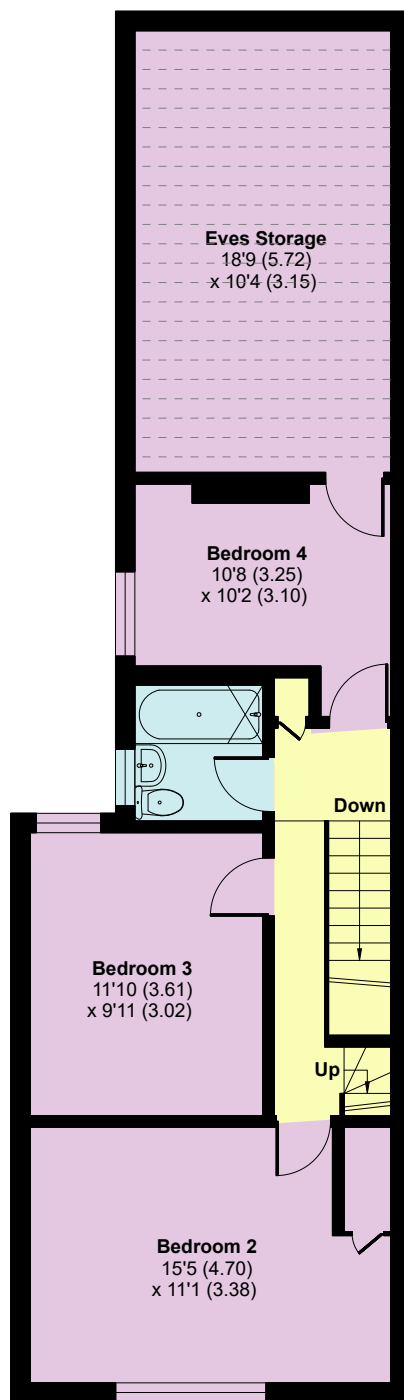
Total = 2109 sq ft / 195.9 sq m

For identification only - Not to scale

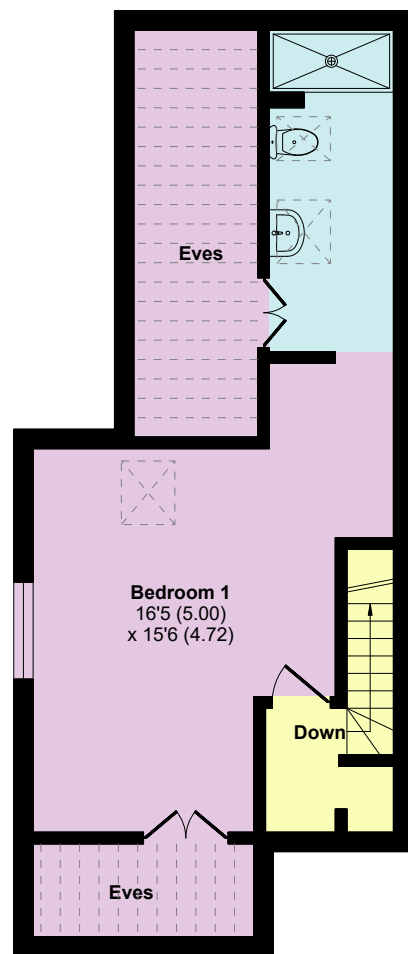
Denotes restricted head height



GROUND FLOOR



FIRST FLOOR



SECOND FLOOR

